

# National

# FFA WEEK

**FEBRUARY 17-24, 2024**



A Special Supplement to  
**News  
Journal**



**GROW IT  
FASTER,  
STRONGER,  
BETTER.**

Farmers put their trust in us. That's why we only carry proven, scientifically-sound products from brands we know and trust.

SINCE 1959, HIGH QUALITY SEED



**MASTER  
FEED MILL  
OH, USA**

CROP PROTECTION, AND FERTILIZER

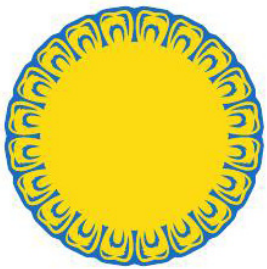
**Seed - Chemical - Fertilizer  
(937) 382-3873**

**SUPPLYING  
FARMS  
SINCE 1959**

# EMBLEM



The national FFA emblem, consisting of five symbols, is representative of the history, goals and future of the organization. As a whole, the emblem covers the broad spectrum of FFA and agriculture. Each element within the emblem has unique significance.



The cross section of the ear of corn provides the foundation of the emblem, just as corn has historically served as the foundation crop of American agriculture. It is also a symbol of unity, as corn is grown in every state of the nation.



The rising sun signifies progress and holds a promise that tomorrow will bring a new day, glowing with opportunity.



The plow signifies labor and tillage of the soil, the backbone of agriculture and the historic foundation of our country's strength.



The eagle is a national symbol which serves as a reminder of our freedom and ability to explore new horizons for the future of agriculture.



The owl, long recognized for its wisdom. Symbolizes the knowledge required to be successful in the industry of agriculture.



The words Agricultural Education and FFA are emblazoned in the center to signify the combination of learning and leadership necessary for progressive agriculture.

The emblem and the letters "FFA" are protected by trademark registration in the U.S. Patent Office and by Public law 105-225, 105th Congress.



## REAL ESTATE & EQUIPMENT AUCTIONS

### PROUD TO SUPPORT OHIO AGRICULTURE

We are proud to partner with families and corporations in the agricultural marketplace by using modern technology and old-fashioned hard work to help them achieve their goals.

**ATTENTION OHIO LAND OWNERS**  
We Have Qualified Buyers Seeking Land to Purchase



**Offering Online Bidding from Any Device!**

**Call Nick Cummings, CAI**  
**Auctioneer / Auction Advisor**  
**740.572.0756 | nick@thewendtgroup.com**  
Washington Court House, Ohio

Choose The Wendt Group for the Nation's Best Auction Marketing!

[www.thewendtgroup.com](http://www.thewendtgroup.com)



# How does FFA help students?

Local, state and national FFA programs and activities help members develop public speaking skills, conduct and participate in meetings, manage financial matters, strengthen problem-solving abilities and assume civic responsibilities.

**- FFA Motto -**  
**Learning to Do,**  
**Doing to Learn,**  
**Earning to Live,**  
**Living to Serve,**

# Mission Statement

FFA makes a positive difference in the lives of students by developing their potential for premiere leadership, personal growth and career success through agricultural education

**WILMINGTON Savings Bank**  
Modern Banking the Hometown Way

184 N. South Street | 137 N. High Street  
Wilmington, OH 45177 | Hillsboro, OH 45133

[www.wilmingtonsavings.com](http://www.wilmingtonsavings.com)

**(937) 382-1659**

Member FDIC



# Blanchester FFA



photos courtesy of Blan FFA Facebook page



**Tractor Supply Company**  
proudly supports the FFA, 4H and all things "Life Out Here!"

**TSC TRACTOR SUPPLY CO**

OH-70353686

**UPTOWN Printing**  
Serving Clinton County Since 1995

DOWNTOWN WILMINGTON ACROSS FROM THE MURPHY THEATRE  
55 W. MAIN STREET ~ WILMINGTON, OH 45177  
937.382.5641  
UPTOWN2014@AOL.COM

OH-70353852

APPAREL PRINTING	DATABASES	INVITATIONS	POST CARDS
BINDING SERVICE	DIRECT MAIL	LABELS & STICKERS	POSTERS
BROCHURES	DOOR HANGERS	LETTERHEAD	RACK CARDS
BUSINESS CARDS	ENVELOPES	MAGAZINES	STAMPS
BUSINESS FORMS	ENTRY / RAFFLE	MENUS	STATIONARY
CANVAS PRINTS	TICKETS	NEWSLETTERS	SPORTS PROGRAMS
CARBONLESS	EVERY DOOR	NOTE CARDS	TABLE TENTS
FORMS	DIRECT MAIL	NOTE PADS	VARIABLE DATA
COPY SERVICE	FOLDERS	OFFERING	PRINTING
CHURCH BULLETINS	FLYER'S / INSERTS	ENVELOPES	WRIST BANDS
CUSTOMER	GRAPHIC DESIGN	PARKING PERMITS	YARD SIGNS

**SFM INSURANCE**  
WILMINGTON

2333 Rombach Ave.  
P.O. Box 930  
Wilmington, OH 45177  
P: 937.382.2546  
W: sfminsurance.com

*A part of the community, a part of your life.*

OH-70353451

**First State Bank**

1584 Rombach Ave.  
**Wilmington**  
937.382.1057

PROUDLY RURAL since 1884

fsb4me.com

Member FDIC

OH-70353026

# MNB Merchants National Bank

2829 Rombach Avenue | (937) 805-0332  
1288 Wayne Road | (937) 805-4800



*Visit us online!*  
[www.merchantsnat.com](http://www.merchantsnat.com)

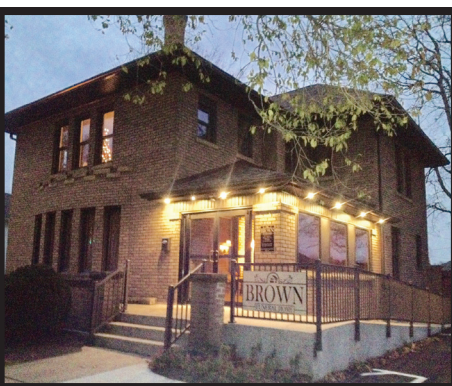


OH-70353489

# Clinton-Massie FFA



Photos courtesy of CM FFA Facebook page



Celebrating  
Lives,  
Committed to  
Community

**BROWN**  
Funeral Home  
[www.arehart-brown.com](http://www.arehart-brown.com)  
237 W. Main Street • Wilmington  
937-382-2247

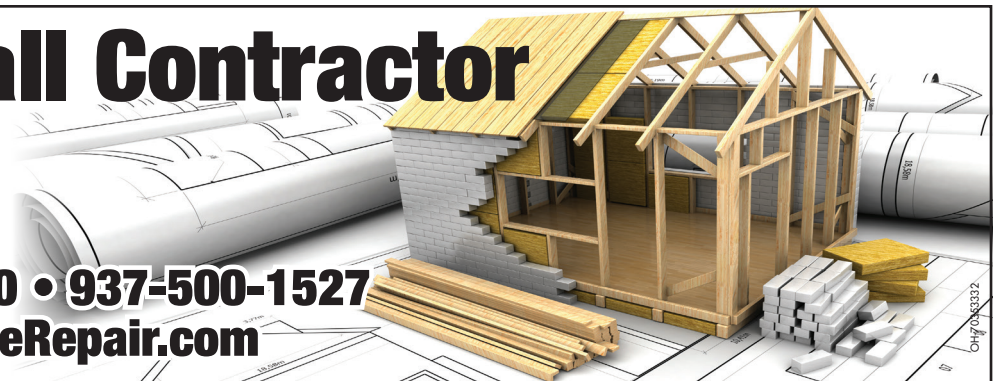
Kevin Brown & Billy Arehart



## Your One-Call Contractor

**JSL HOME REPAIRS**  
ROOFING-SIDING-GUTTERS  
KITCHEN & BATH

937-382-3350 • 937-500-1527  
[JSLHomeRepair.com](http://JSLHomeRepair.com)



09/20/2023

# East Clinton FFA



photos courtesy of Matt Griffith



#DiscoverYour **Great**ness

 A collage of FFA members engaged in various activities: a girl with a horse, a boy with a wrench, a boy with a snake, a boy with a large fish, a girl with a toothbrush, a girl with a cat, and a boy with a hard hat.
 

Great Oaks™  
CAREER CAMPUSES  
Diamond • Laurel • Live • Scarlet

greatoaks.com @GreatOaksOhio

**THE**  
First National Bank  
**NFB**  
Member FDIC

Friendly  
Neighborhood  
Banking at  
The First National Bank  
of Blanchester  
937-783-2451  
www.fnbbblanchester.com

**pbsanimalhealth**  
Where the health of your animals comes first

**We Support the 4-H/FFA**  
We offer a 5% discount to all 4-H and FFA members

2721 Progress Way, Wilmington, OH  
**937-382-4572**

**Houston's H.V.A.C.R., Inc.**  
Heating, Air Conditioning & Refrigeration  
"We're Always There When You Need Us"

- State Lic # 13678
- Insured & Bonded
- NATE Certified
- EPA Approved
- Ari-Gama Approved
- 24 Hr. Emergency Service

Owner: Mike Houston  
1002 W. Main Street, Wilmington, Ohio 45177  
1-800-998-HEAT • Office (937) 382-6413  
Fax (937) 382-5877 • Emergency (937) 383-5713

# Wilmington FFA



photos courtesy of WHS FFA Facebook page



**Bush Auto Place** wants to thank FFA and our local farmers

**BUSH**  
AUTO PLACE

Home of the Lifetime Powertrain  
**937-382-2542**  
1850 Rombach Ave.  
Wilmington, OH 45177

**BUCKLEY BROS., INC**  
CALL TODAY FOR ALL YOUR FEED NEEDS!

WILMINGTON 937-382-2566  
WASHINGTON COURT HOUSE 740-335-4401

SOUTH BLOOMFIELD 740-983-8900  
MORROW 513-899-0304  
THE PLAINS 740-797-3032

WWW.BUCKLEYBROSINC.COM

**IMPRESSIONS CREATED**  
Open Tuesday-Saturday

1334A Rombach Avenue, Wilmington Plaza  
(937) 382-0770



**MAYER**  
Agri  
Equipment  
Call Today For Your Combine Needs  
St. Rt. 68 & I-71, Wilmington, OH • 800-562-9695  
Visit our website at [www.mfeag.com](http://www.mfeag.com) • [mfe@mfeag.com](mailto:mfe@mfeag.com)



**BDK**  
FEED • PET • LAWN & GARDEN  
LUMBER • HARDWARE  
660 WEST MAIN STREET  
BLANCHESTER, OHIO 45107  
(937) 783-3276  
[BDKFEED.COM](http://BDKFEED.COM)



*National* **FFA WEEK**  
FEBRUARY 17-24, 2024

National FFA Week gives every FFA member in every chapter the opportunity to join voices in raising awareness of FFA and advocating for agriculture in our communities and across the country.

**Share your stories!** | @NationalFFA | #FFAWeek | #FFAAlumni | #GiveFFADay

SAT. | FEB.  
**17**

**POST** how your chapter will celebrate National FFA Week.

SUN. | FEB.  
**18**

**SHARE** a photo and your SAE story.

MON. | FEB.  
**19**

**SHARE** what your chapter is doing to serve your community.

TUES. | FEB.  
**20**

**CONNECT** with an FFA Alum who inspires you. Tell them why.

WED. | FEB.  
**21**

**SHARE** how an ag teacher or advisor has impacted your life.

THURS. | FEB.  
**22**

**ASK** friends and family to give to FFA today.

FRI. | FEB.  
**23**

**POST** a selfie wearing your blue today.

SAT. | FEB.  
**24**

**SHARE** photos from your #FFAWeek celebration.



**BUSAM**  
Welcome to Busam Ford  
The Dealer Closest To Your Heart!  
At Home or In-Store, We're Here For You  
**NEW INVENTORY DAILY!**  
Mobile Service Unit Now Available!  
**No credit? Bad Credit?  
No Problem! Guaranteed  
Financing Available!**  
You Can't spell Busam without USA  
1182 West Main St. Wilmington, OH 45177 | 937-556-6383 | [busamford.com/](http://busamford.com/)



**BANE-WELKER**  
SINCE 1967 EQUIPMENT  
Employee Owned. Customer Focused.  
**Proud Supporters of Local Ag!**  
WILMINGTON, OH  
3025 Progress Way  
(937) 382.0941  
15 Locations in IN & OH!  
Bane-Welker.com

# National FFA Organization's Federal Charter

The National FFA Organization's Federal Charter states that one of our purposes is "to seek and promote inclusion and diversity in its membership, leadership, and staff

to reflect the belief of the FFA in the value of all human beings." At National FFA, We are dedicated to providing our members with the tools and experiences to be successful in an

interconnected and diverse world. "Future Farmers of America" – today known as the National FFA Organization – was founded by a group of young farmers in

1928. Their mission was to prepare future generations for the challenges of feeding a growing population. They taught us that agriculture is more than planting and harvesting – it's a science,

it's a business and it's an art. Today, more than 945,988 student members aged 12-21 in more than 9,163 chapters nationwide are engaged in a wide range of

agricultural education activities. Students join FFA to explore a variety of careers in the food, fiber and natural resources industry. They are the next generation of leaders.

## Students Across the Country to Celebrate Agriculture

Monday, Feb. 5, 2024/National FFA Organization – This month, FFA members across the country, Puerto Rico, and the U.S. Virgin Islands will celebrate agriculture and FFA. It's all part of National FFA Week.

National FFA Week is a time for FFA members to raise awareness about the National FFA Organization's role in developing future leaders in agriculture and the importance of agricultural education.

FFA provides the next generation of leaders who will change the world. As the nation's top school-based youth leadership development organization, FFA helps young people meet new agricultural challenges by encouraging members to develop their unique talents and explore their interests in various career pathways. FFA members are our future leaders, food suppliers,

innovators and more!

National FFA Week runs from Saturday to Saturday, encompassing Feb. 22, George Washington's birthday. This year, the week kicks off on Feb. 17 and culminates on Saturday, Feb. 24.

The National FFA Board of Directors designated the weeklong tradition, which began in 1948, to recognize Washington's legacy as an agriculturist and farmer. A group of young farmers founded FFA in 1928, and the organization has been influencing generations to believe that agriculture is planting and harvesting — and involves science, business, and more.

"National FFA Week is a meaningful week for members across our country as we celebrate an organization that is welcoming to all and crucial to developing the next generation of leaders and those who will fill the

ever-growing need in the talent pipeline," said National FFA Advisor Dr. Travis Park. "Not only is it an opportunity to share our message with a broader audience, but it's also an opportunity for our FFA chapters and members to celebrate agriculture and agricultural education while thanking their supporters — their local alumni and supporters chapters, agriculture teachers, or local businesses."

National FFA Week is a time for FFA members to share agriculture with their fellow students and communities. During the week, chapters also give back to their communities through various service projects.

The six National FFA Officers will connect with chapters nationwide throughout the week — delivering keynotes, greetings, workshops and more.

President Amara Jackson will

visit with FFA members in Texas and Arkansas. Western Region Vice President Emily Gossett will see FFA members in Florida and Georgia. Eastern Region Vice President Morgan Anderson will visit with FFA members in Iowa and Colorado. Central Region Vice President Kanyon Huntington will visit with FFA members in Kentucky and Virginia. Southern Region Vice President Carter Howell will visit with FFA members in Connecticut and Maryland. Secretary Grant Norfleet will visit with FFA members in Idaho and Alaska.

The National FFA Organization is a school-based youth leadership development organization of more than 945,000 student members as part of 9,163 local FFA chapters in all 50 states, Puerto Rico and the U.S. Virgin Islands.

## Help Grow Future Leaders by Giving Back on Give FFA Day

Monday, Jan. 29, 2024 – Individuals across the country can make a difference in the lives of the more than 945,000 FFA members next month by participating in Give FFA Day during National FFA Week.

For the eighth year, during National FFA Week, individuals will have an opportunity to step up and support FFA and agricultural education through Give FFA Day on Thursday, Feb. 22. Funds raised support various programs on local, state and national levels. During the 24 hours of giving, donors can donate to the National FFA and the state FFA associations of their choice.

In February, the organization will celebrate FFA, advisors and members as part of National FFA Week, which includes giving back during Give FFA Day. For over 90 years, the National FFA Organization has strived to make a difference in students' lives. Donations help FFA grow the next generation of leaders. Through FFA, members can find their paths to success.

With almost a million members, there is a need for sustained funding

to provide valuable programs, events, skills training and more; through generous supporters like those on Give FFA Day, FFA members can thrive.

"FFA has been instrumental in growing my skills related to leadership, teamwork and communication. Donor support makes it possible for students like me to grow and achieve our goals in both a personal and career capacity," said Lauren Thornhill, an Ohio state FFA officer.

This year, the organization aims to raise \$1 million during the 24 hours of Give FFA Day. FFA hopes to achieve this by challenging everyone to contribute throughout the day. Donors can give to support the mission of National FFA, support their home state, provide the iconic FFA blue jackets, travel assistance to FFA members for career and leadership development events, teacher support and resources and opportunities for female FFA members.

RFD-TV has generously pledged to match the first \$100,000 in donations on Give FFA Day.

In addition, American

Family Insurance and John Deere will also match donations on Give FFA Day. Matching details will be announced throughout the day.

"Donors at every level ensure we continue to grow the future leaders of agriculture and the world," said Kimberly Coveney, the annual fund manager for the National FFA Foundation. "Give FFA Day is an opportunity for each FFA supporter to magnify their impact on the lives of young people when they join other donors across the country. Every gift makes a difference, and we are grateful for our donors and their continued support and belief in FFA and agricultural education."

To prepare for Give FFA Day, visit [FFA.org/GiveFFADay](http://FFA.org/GiveFFADay). See how you can give back to the organization and encourage others to do the same.

The National FFA Organization is a school-based national youth leadership development organization of more than 945,000 student members as part of 9,163 local FFA chapters in all 50 states, Puerto Rico and the U.S. Virgin Islands.

## FFA Membership

The National FFA Organization provides leadership, personal growth and career success training through agricultural education.

Today, there are 945,988 FFA members in 9,163 chapters in all 50 states, Puerto Rico and the U.S. Virgin Islands.

FFA members are in grades 5-12 and college.

FFA members embrace concepts taught in agricultural science classrooms nationwide, build valuable skills through hands-on experiential learning and each year demonstrate their proficiency in competitions based on real-world agricultural skills.

### Education

More than 13,000 FFA advisors and agriculture teachers deliver an integrated model of agricultural education, providing students with innovative and leading-edge education and enabling them to grow into competent leaders.

92 percent offer agriscience; 71 percent offer advanced agriscience and biotechnology; 59 percent offer agricultural mechanics; 49 percent offer horticulture; 43

percent offer animal science; and 24 percent offer environment-related.

23 percent of teachers have five or fewer years of teaching experience.

The shortage of qualified agriculture teachers is the greatest challenge facing FFA and agricultural education.

### Career Exploration

FFA classroom activities include math and science as well as hands-on work experience and the development of life skills, helping members discover their career path and realize success.

Collectively, FFA members earn more than \$4 billion annually through their hands-on work experience.

Members participate and learn advanced career skills in 47 national proficiency areas based on their hands-on work experiences ranging from agricultural communications and food science and technology to turf grass management and wildlife production and management.

According to a student magazine readership study, 87 percent of our students are interested

in learning about career exploration, 81 percent about college preparation and 81 percent about technology.

Through 24 national career development events and one activity, FFA members are challenged to real-life, hands-on tests of skills used to prepare them for 300+ unique careers in agriculture.

Adult membership is open to anyone who is interested in supporting and promoting agriculture, agricultural education and the FFA at the local, state and national level.

If you are proud of FFA and want to help local FFA members acquire knowledge and experience from agricultural education and FFA activities –becoming an adult member is for you! FFA advisors and members all across the country rely on volunteers to help support their chapters through the gifts of time, talent and resources in order to gain community support and give teachers more time and freedom to do what they do best – teach students. Join us and give back your skills, starting at the local level.



**HALDERMAN**  
REAL ESTATE & FARM MANAGEMENT

We are here to help people with their farm needs whether it's Farm Management, Auctions, Private Sales or Appraisals. If it has to do with the business of farming - *we can help!*



**Robert McNamara** | Wilmington, OH  
614.309.6551  
[robertm@halderman.com](mailto:robertm@halderman.com)



**Emily Elfers** | North Hampton, OH  
937.631.5047  
[emilye@halderman.com](mailto:emilye@halderman.com)

800.424.2324 | [halderman.com](http://halderman.com)

*We are with you*  
**EVERY STEP OF THE WAY**

